

*How to attach COOLEX in the mouth.*



Prior to insertion, simply bend the silicone tube and provide preangle, so that the tube fits to surrounding soft tissue.

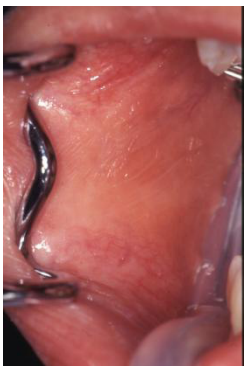


When inserting the tube into the oral cavity, hold the wire portion and press it down so that the COOLEX is placed between maxillary and mandibular dentition.



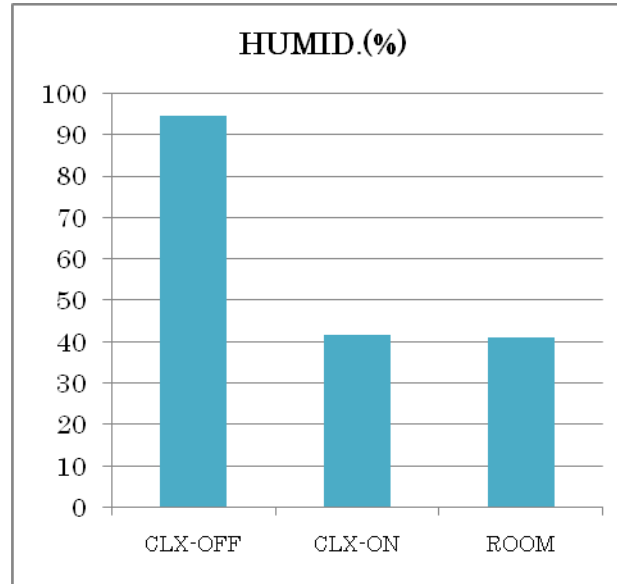
The patient's mouth is kept open by means of the coil spring in the back. The tongue, cheek and lip are effectively retracted without discomfort.

*COOLEX creates a dehumidification effect.*



COOLEX makes airflow from extraoral to intraoral and creates a dehumidification effect that results in an ideal atmosphere for adhesive dentistry. The photograph shows dried mucosa.

*Alternation of intraoral humidity with COOLEX*



*Structure of COOLEX*



Carefully designed and manufactured spring structure keeps the patient's mouth open painlessly.



Silicon tubes accomodating vacuum passages are precisely quality-controlled for medical use and also effective for tongue and buccal mucosa retraction.



The light aluminum valve integrated in the connector makes it possible to adjust vacuum flow.

*Practical Applications*



Tooth preparation with complete retraction of cheek, lip and tongue



Filling under dry conditions



Cementation without saliva



Endodontic treatment without a rubber dam



Even a child will accept this instrument, because COOLEX is a painless and gentle mouth opener.